



IIPOD-Monterrey Twinning Ports Workshop



September 22, 2008



International Inland Port of Dallas (IIPOD)

- A third phase of regional intermodal development (building off DFW Airport and Alliance) that is a key driver in making Dallas the nation's premier logistics and distribution center
- A catalyst for Southern Sector investment, increasing city-wide tax base, job growth and development of sustainable communities

Overview

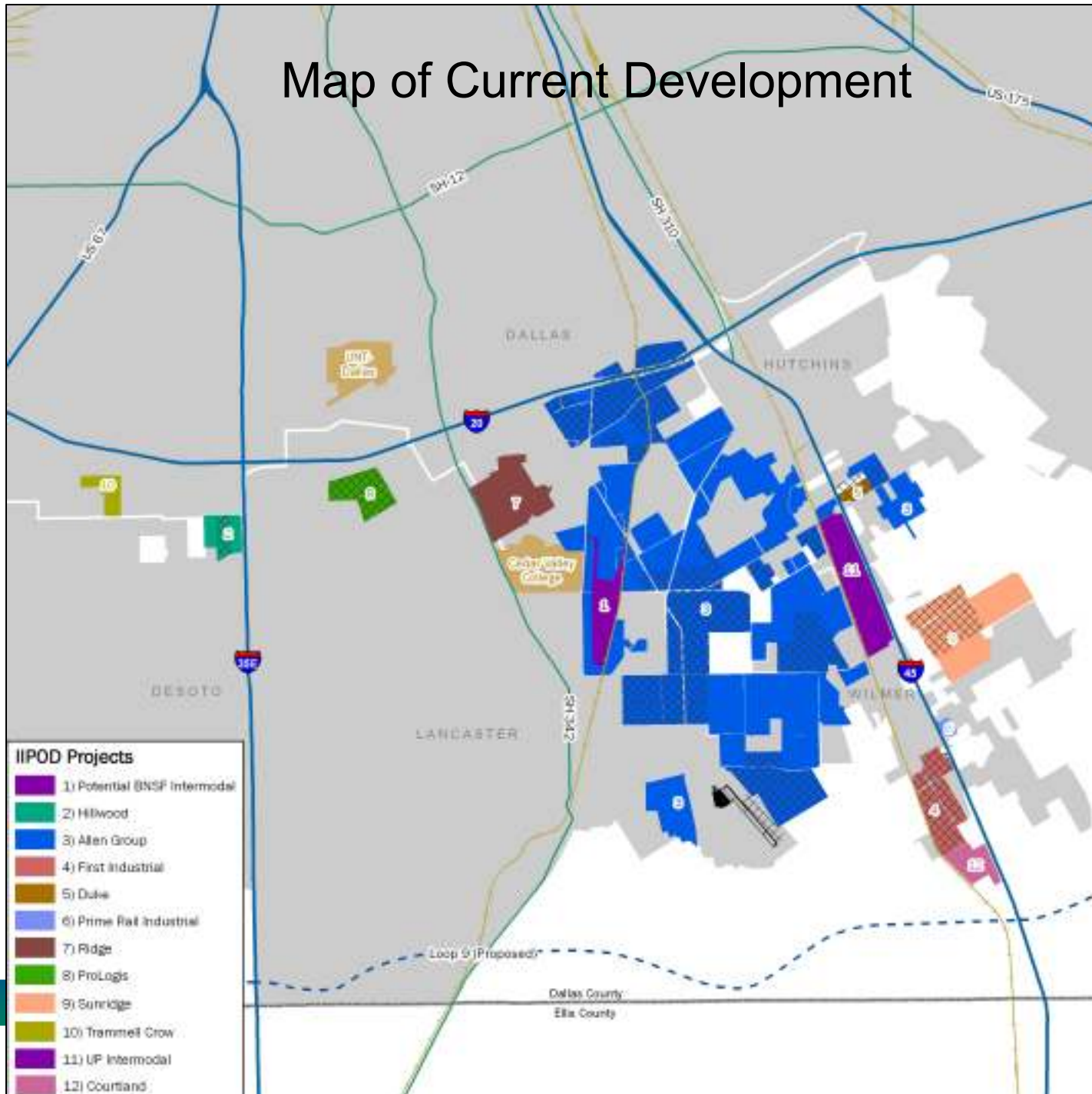
- Public-Private partnership with private sector leading development
 - Stakeholders include developers, railroads, trucking companies, 3PLs, and governments
- Takes advantage of Southern Dallas' superior transportation infrastructure
 - 5 Interstate highways
 - 2 Class I railroads
- Initial efforts focused on area boxed by I-20, I-35, I-45 and the Dallas County line
- Multiple developers with 7500 acres planned for development



Current development

Developer	Location	Project
Allen Group	Dallas, Wilmer, Hutchins, Lancaster	6000 acres total, Approximately 825,000 sq ft built
Courtland	Wilmer	120 acres, First building 352,000 sq ft
Duke	Hutchins	39 acres First building 624,000 sq ft
First Industrial Realty Trust	Wilmer	350 acres, First building 500,000 sq ft
Hillwood	DeSoto	113 acres First building 500,000
Prime Rail	Wilmer	23 acres Container storage
ProLogis	Lancaster	200 acres, First building 650,000 sq ft.
Ridge	Dallas	303 acres
Sunridge	Wilmer	327 acres, First building 520,000 sq ft
Trammell Crow	Dallas	100 acres, First building 531,000 sq ft

Map of Current Development





IIPOD and Monterrey

- Monterrey is the leading manufacturing center in Northern Mexico
 - Substantial cargo flows between region and Dallas
- 684 highway miles separate the two areas
- Two rail corridors
 - UP/Ferromex: 723 miles
 - KCS: 1050 miles (through Shreveport)

IIPOD pilot programs

- COD is in talks to develop up to two pilot programs between Monterrey and Dallas
 - Would enhance container security either through tracking or container seals
 - These enhancements would facilitate customs clearance
- In addition, COD is in preliminary stages of discussing customs facilities in the IIPOD area

Next Steps

- Identify stakeholders for pilot programs (in progress)
- Secure funds for pilot programs (in progress)
- Anticipate results from pilot programs in about a year



Questions?

Karl Zavitkovsky

karl.zavitovsky@dallascityhall.com

214.670.1685



KCS rail map